

Note

TRI+ represents the interface between the TRI dental implant system and the Dental Wings digital solutions. The following instructions are intended only for users who are familiar with the Dental Wings solutions.

Indications

CADCAM

- CAD abutments
- Cement retained TRI implant crowns and bridges
- Screw retained TRI implant bars and bridges

Guided Surgery (coDiagnostiX)

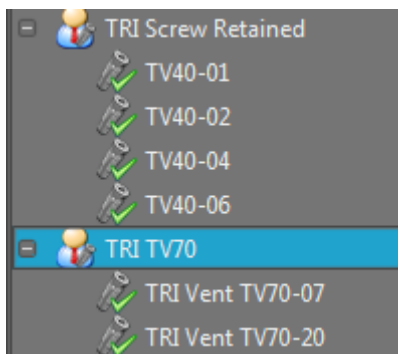
- 3D implant planning
- Guided pilot drilling without depth stop
- Guided pilot drilling with depth stop

Process Description CAD/CAM

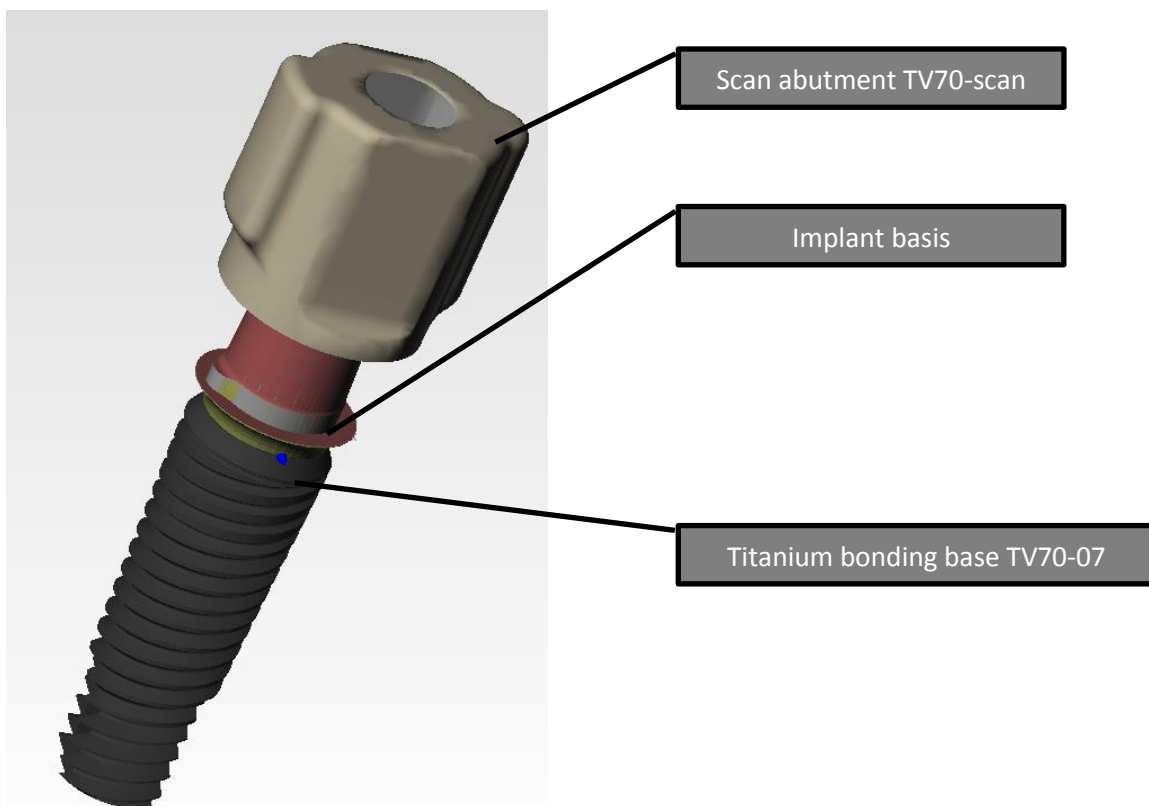
Cement Retained Restorations

Cement retained restorations on TRI implants are based on the TRI TV70 titanium bonding bases.

Please use the TRI TV70 implant kit, see download section at the end of the document.



TRI TV70 implant kit



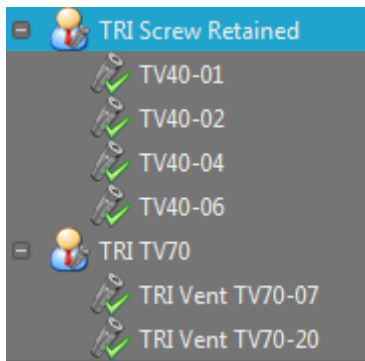
Example: DW implant kit for TRI TV70-07

Note: check alignment between scanbody and titanium bonding base.

Screw Retained Restorations

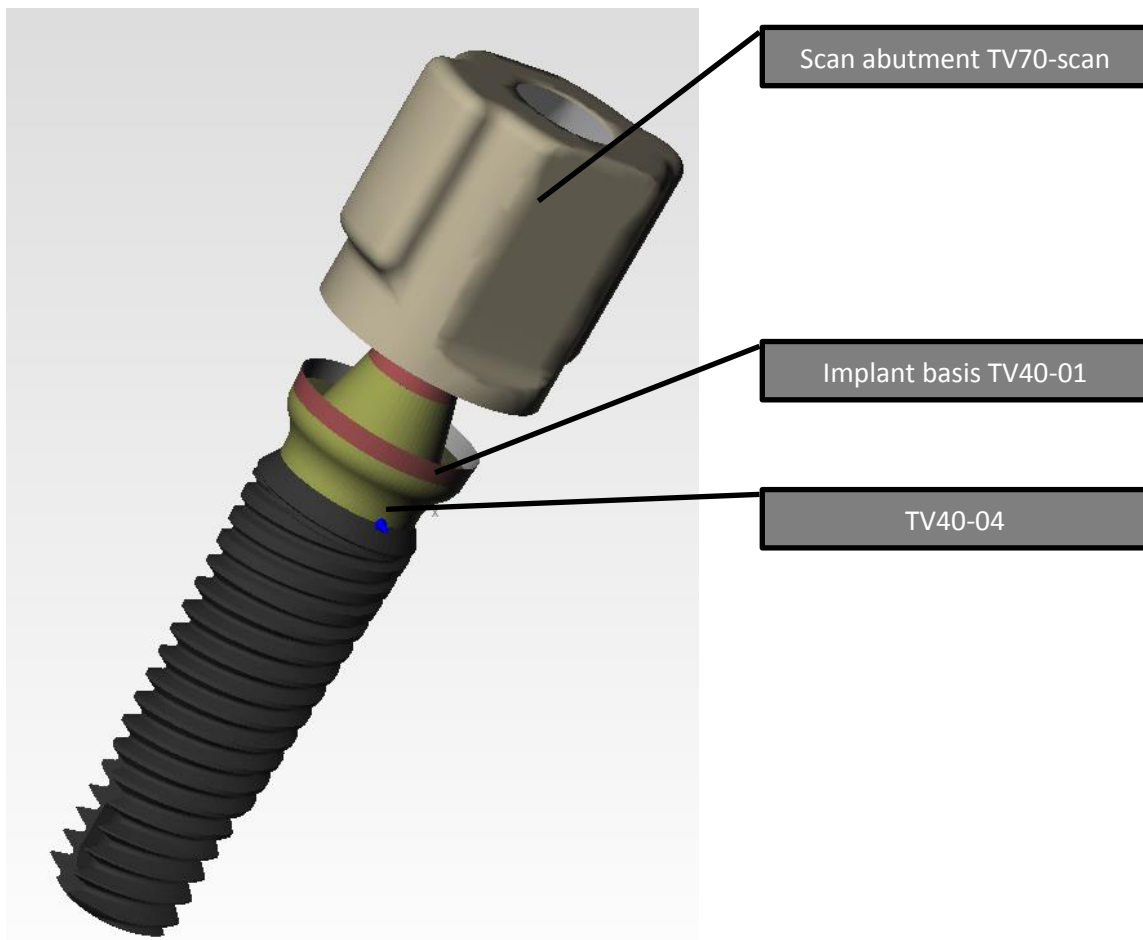
Screw retained restorations on TRI implants are based on the TRI TV40 screw retained abutments.

Please use the TRI Screw Retained implant kit, see download section at the end of the document.

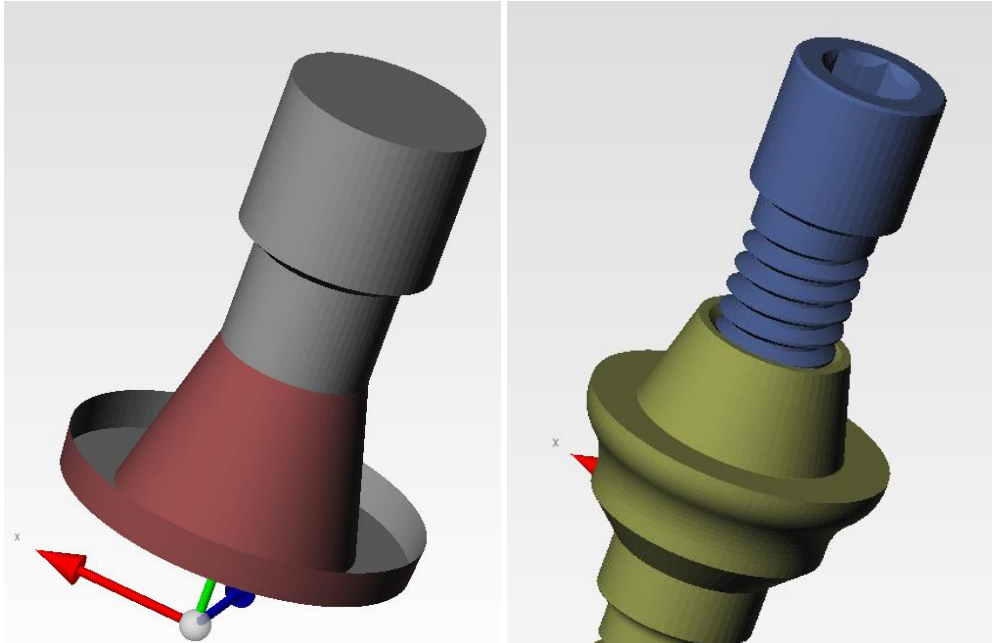


TRI Screw Retained implant kit

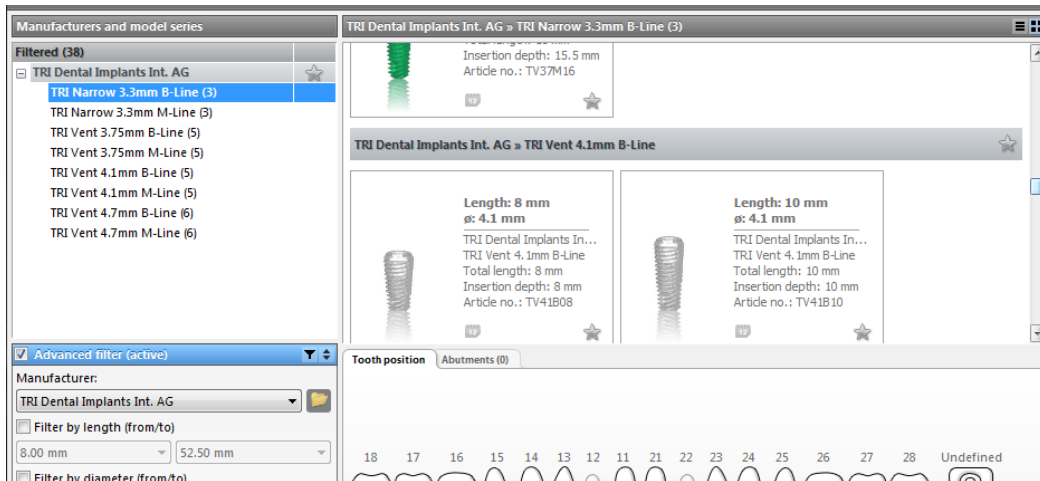
Example: implant kit for TV40-01



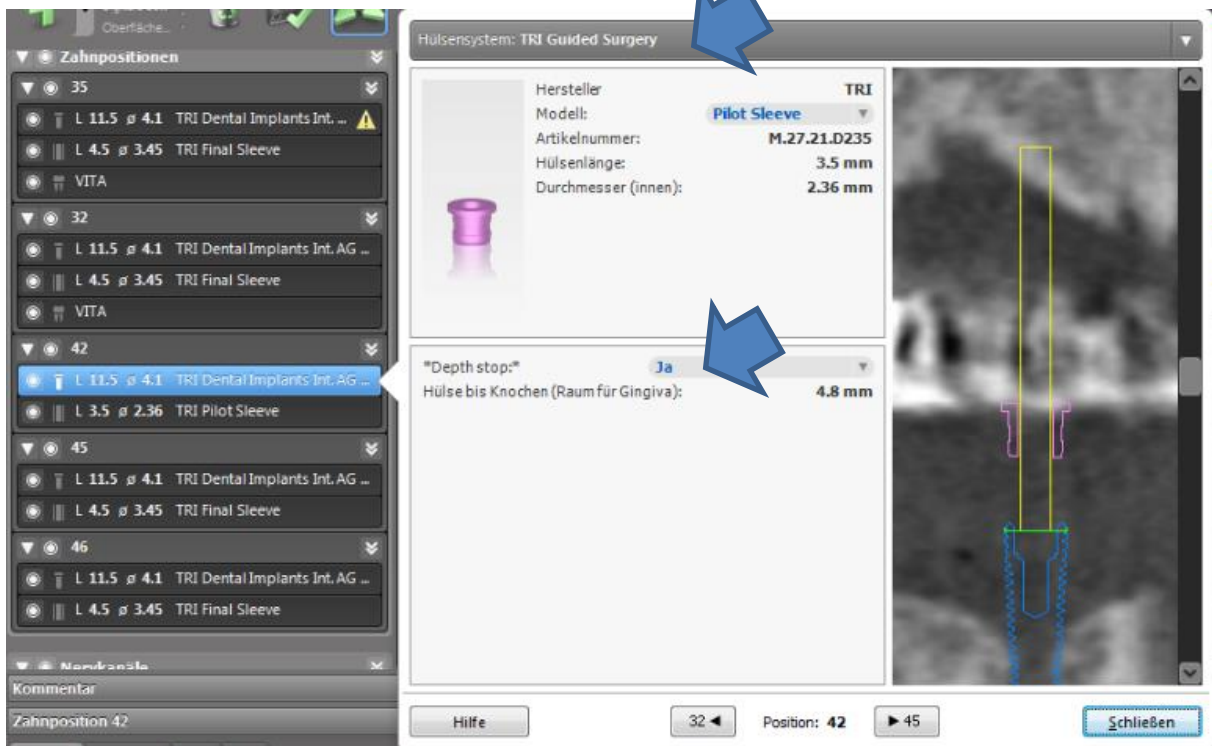
The TV40 implant basis (left picture) is a combination between the TV40 screw retained abutment and the retaining screw RS-PCC. This combination ensures ideal connection geometry and screw channel in the screw retained restoration.



Process Description Guided Surgery (coDiagnostiX)



All TRI implants are implemented in the coDiagnostiX implant library.



Select “TRI guided surgery” in the dropdown menu for the sleeve system. When selecting the depth stop option, the sleeve will automatically be positioned at the correct height above the implant. The long TRI pilot drill (TPD-2.3L) can be used with this sleeve (TPDS) for guided pilot drilling with depth stop without the need for any additional instruments.

Required Articles from TRI Implants

CADCAM

TV70-07	Titanium Bonding-Base with TRI®-Friction
TV70-20	Titanium Bonding-Base with TRI®-Friction
TV70-Scan	Scanbody for Laboratory and Intraoral Scanner
TV40-01	Screw-Retained Abutment, Straight, 1mm
TV40-02	Screw-Retained Abutment, Straight, 2mm
TV40-04	Screw-Retained Abutment, Straight, 4mm
TV40-06	Screw-Retained Abutment, Straight, 6mm
RS-PCC	Replacement Retaining Screw for PCC
TV50-34-F*	Screw Retained Abutment - Angulated 30° - Ø 4.5mm - 4.7mm

* available shortly: please contact your local TRI representative for more details

Guided Surgery

TPD-2.3L	Pilot Drill – Long – 2.3 mm; Nr. 5
TPDS	TRI pilot drill sleeve

Downloads

CADCAM

Please request the following file at digital@tri-implants.com and upload into your Dental Wings software.

- TRI Screw Retained.zip
- TRI TV70.zip

Guided Surgery (coDiagnostiX)

There are no downloads required. All TRI implants are implemented in the current version of coDiagnostiX. The TRI sleeve systems will be implemented in the next version coDiagnostiX 9.1.1 that will be released in November.

For support, please contact digital@tri-implants.com.