

WORKSHOP

SOFT TISSUE MANAGEMENT FOR BONE AUGMENTATION.



Marius
Steigmann



- Soft tissue tension free closure – step by step
- Tension free flap adaptation – multiple options
- Suturing techniques with and against tension
- Adequate soft tissue manipulation for thin and thick biotype
- Improve soft tissue thickness
- Gain soft tissue elasticity
- Create keratinized gingiva

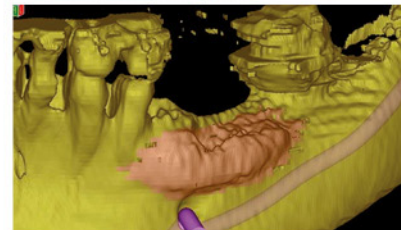
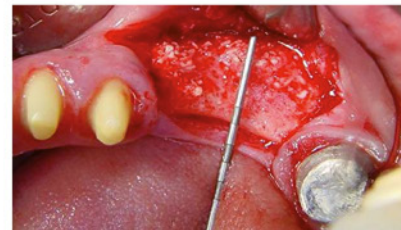
Different tissue biotype react different to surgical trauma. For this reason we have adjusted the surgical approach to the biotype (tissue thickness) specific to each patient and location in the oral cavity.

- Sinuslift
- Soft tissue management for sinuslift
- Bone augmentation in the maxilla-palatal sliding flap
- Bone augmentation in the mandible PPF, VBF or Steipod

PPF → Periosteal Pocket Flap

VBF → Versatil Buccal Flap

The tissue thickness dictates the way it is manipulated for high volume augmentation. Thick biotype can be managed in a classical manner. On the other side thin biotype needs new surgical approaches with specific instruments. The course will describe step by step the gain of soft tissue for tension free closure even in cases of reduced soft tissue thickness.



3th MAY THURSDAY

Start: 09:00h - End: 17:30h

4th MAY FRIDAY

Start: 08:30h - End: 12:00h