



Quality from Switzerland

01.01.2014

Through Research Innovative
www.tri-implants.com

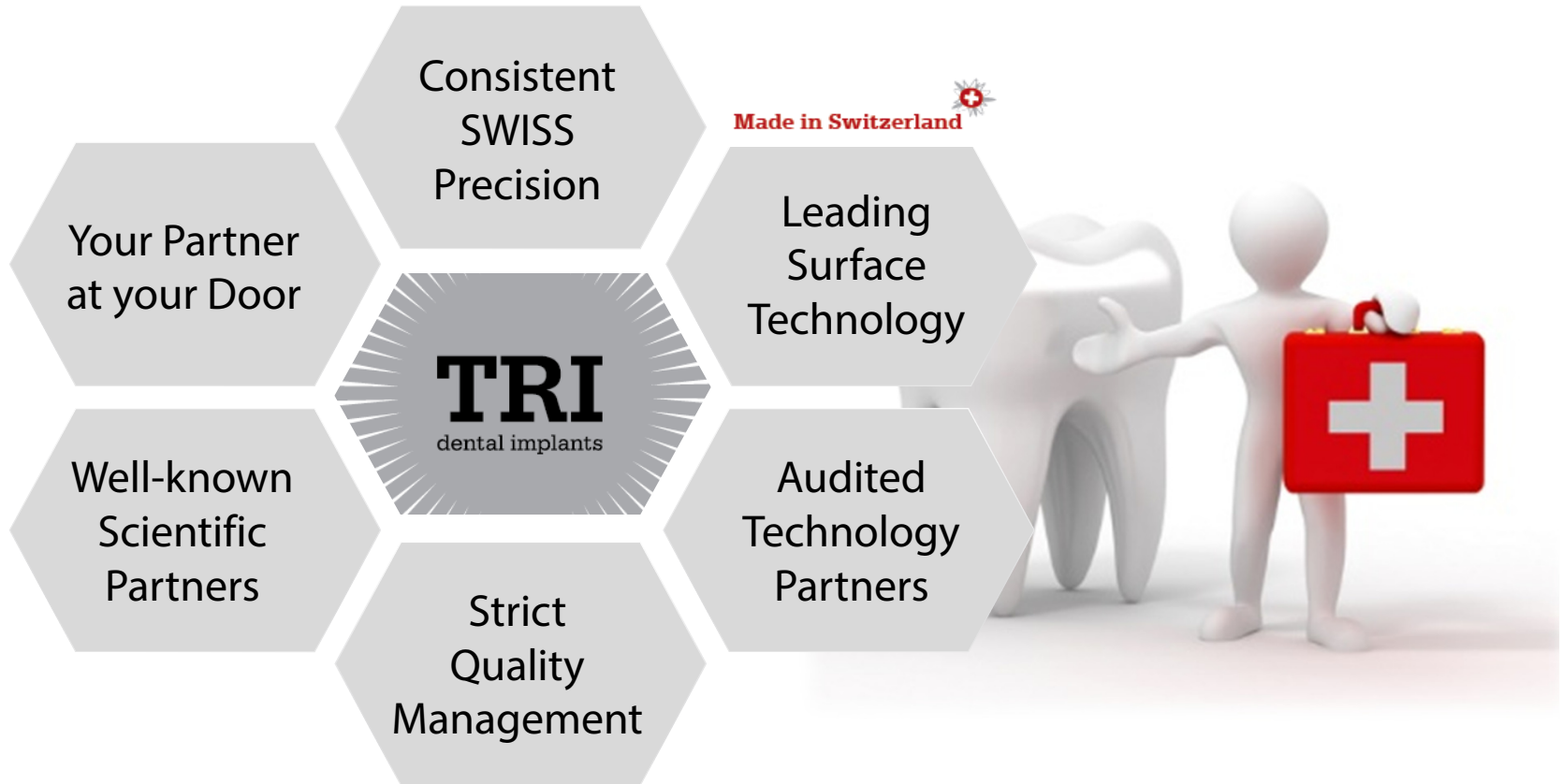
TRI Dental Implants: An example of the highest standards of quality

We deliver quality

- We supply quality. From patent to patient
- Modern production
- Compliance with the relevant ISO, MDD, QC and CGMP standards
- High standards for labeling, packaging, shipping and traceability in compliance with all relevant directives and EN ISO quality standards
- Training
- Post-marketing-monitoring
- Tracking system
- Regular audit of compliance with the legal and statutory provisions

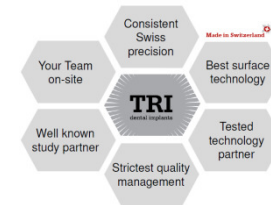


Our Quality Promise from Switzerland!



Consistent Swiss Precision

25 years experience in the manufacturing of dental products for global market leader in the industry



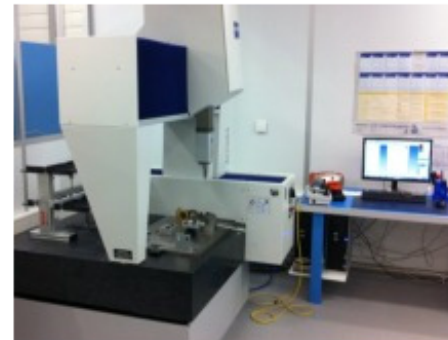
Exterior



Manufacturing



Inspection



Sally port



Quality Control



Sterile Packaging

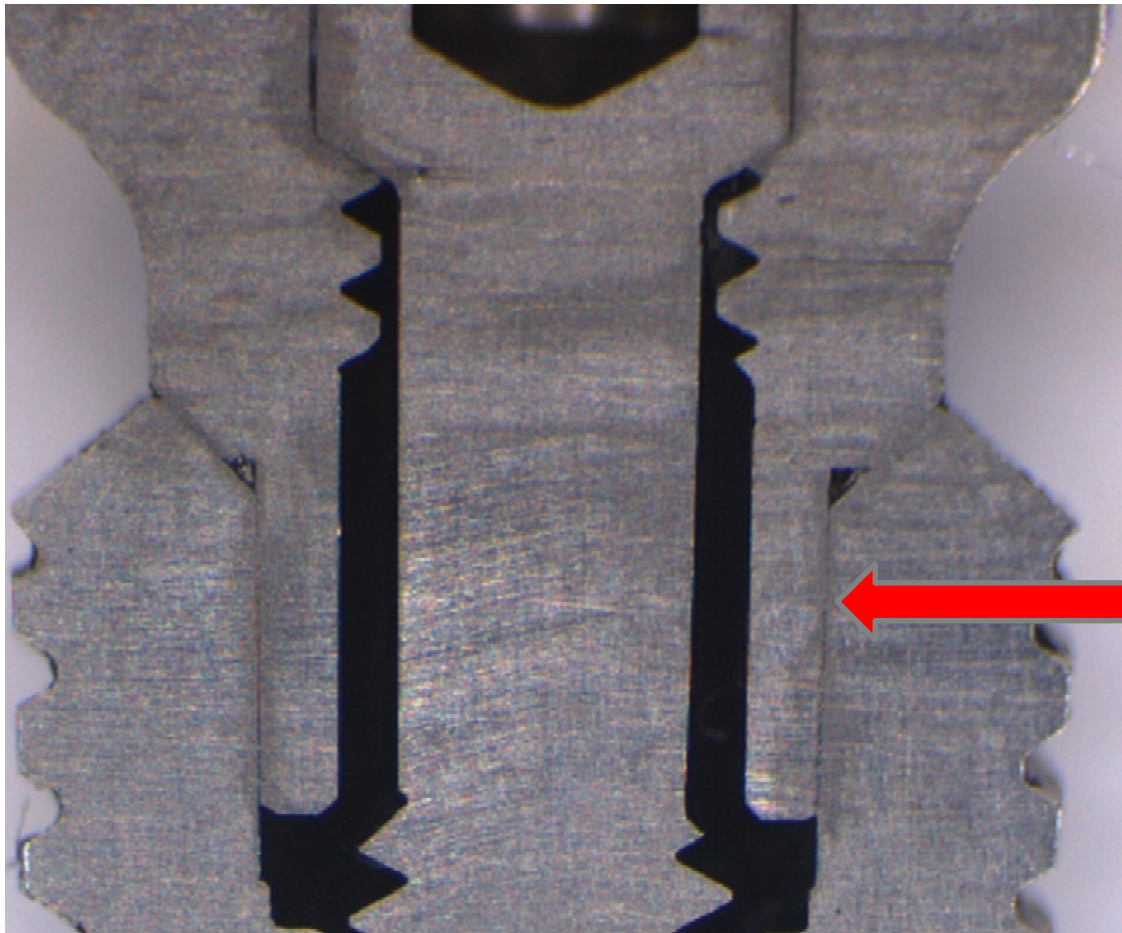
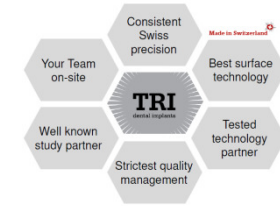


Made in Switzerland 

TRI
dental implants 

Finest Precision Mechanics

The TRI-Friction prosthetic connection is established with an accuracy of 6-thousandth of a millimeter

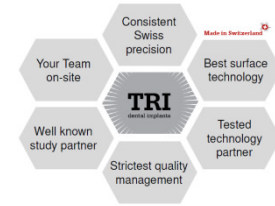


TRI FRICTION technologically is a unique prosthetic connection in TRI Performance Concept

The **tolerance of 0.006mm** help to ensure the smooth and highly precise prosthetic fit with long-term security



The TRI Implant Internal Connection



**Precision mechanics
on highest level:
For us only conceivable
with premium quality
from Switzerland**



Leading surface technology

Surface Technology TRI® SBA in cooperation with our Swiss technology partner Cendres+Metaux



SBA Success Rate Osseointegration



*Implant survival rate of SBA based on official complaint statistic. Latest update: 01.01.2014



Lifetime warranty for dental implants

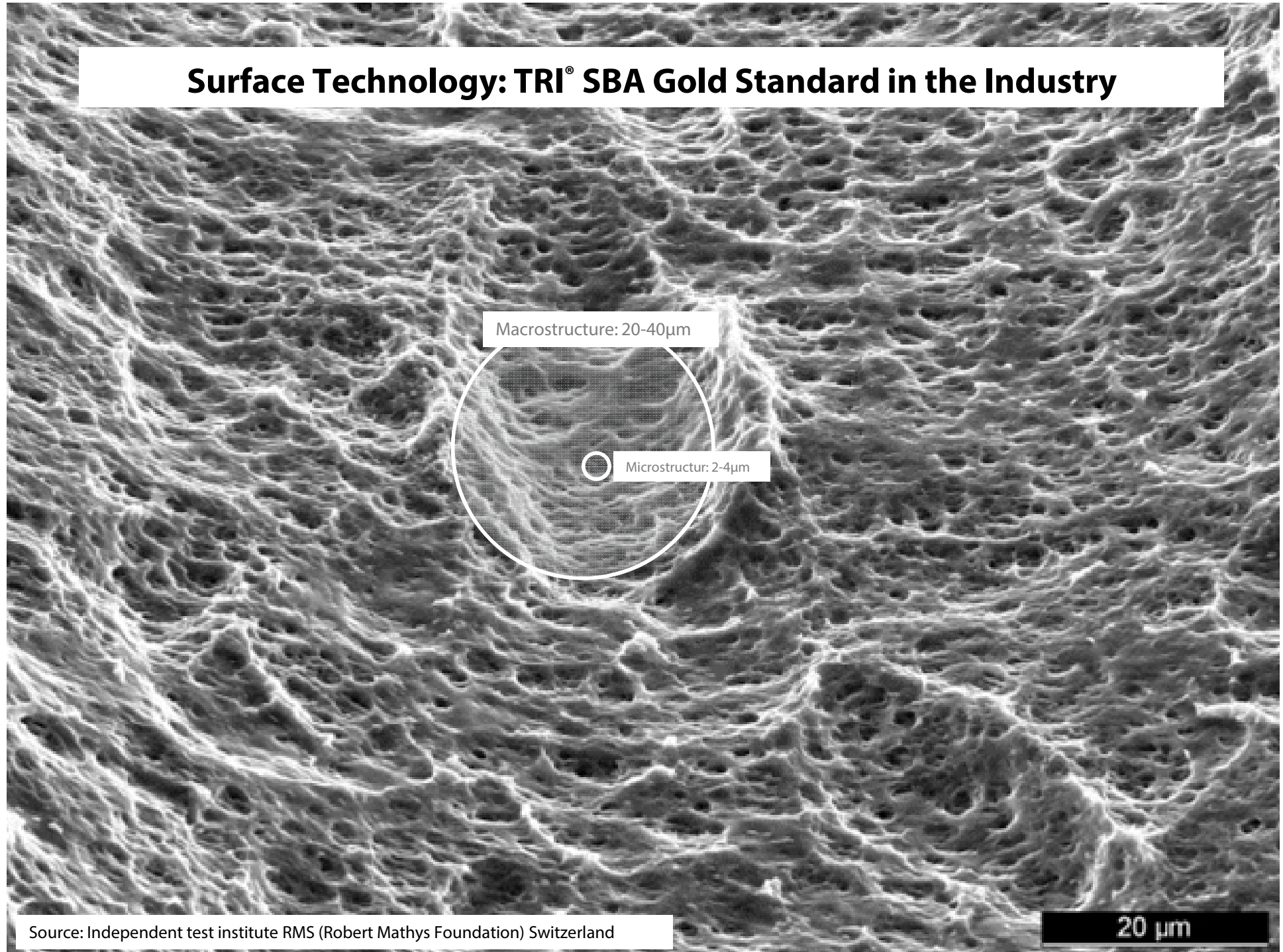
- Surface production with the leading producers C + M in Switzerland. Production capacity of > 1,000,000 implants / year



- The TRI SBA surface has a success rate of 99.2% since its introduction in January 1. 2013. (Source: Implant Success rate of SBA surface. Last 01.01.2014)

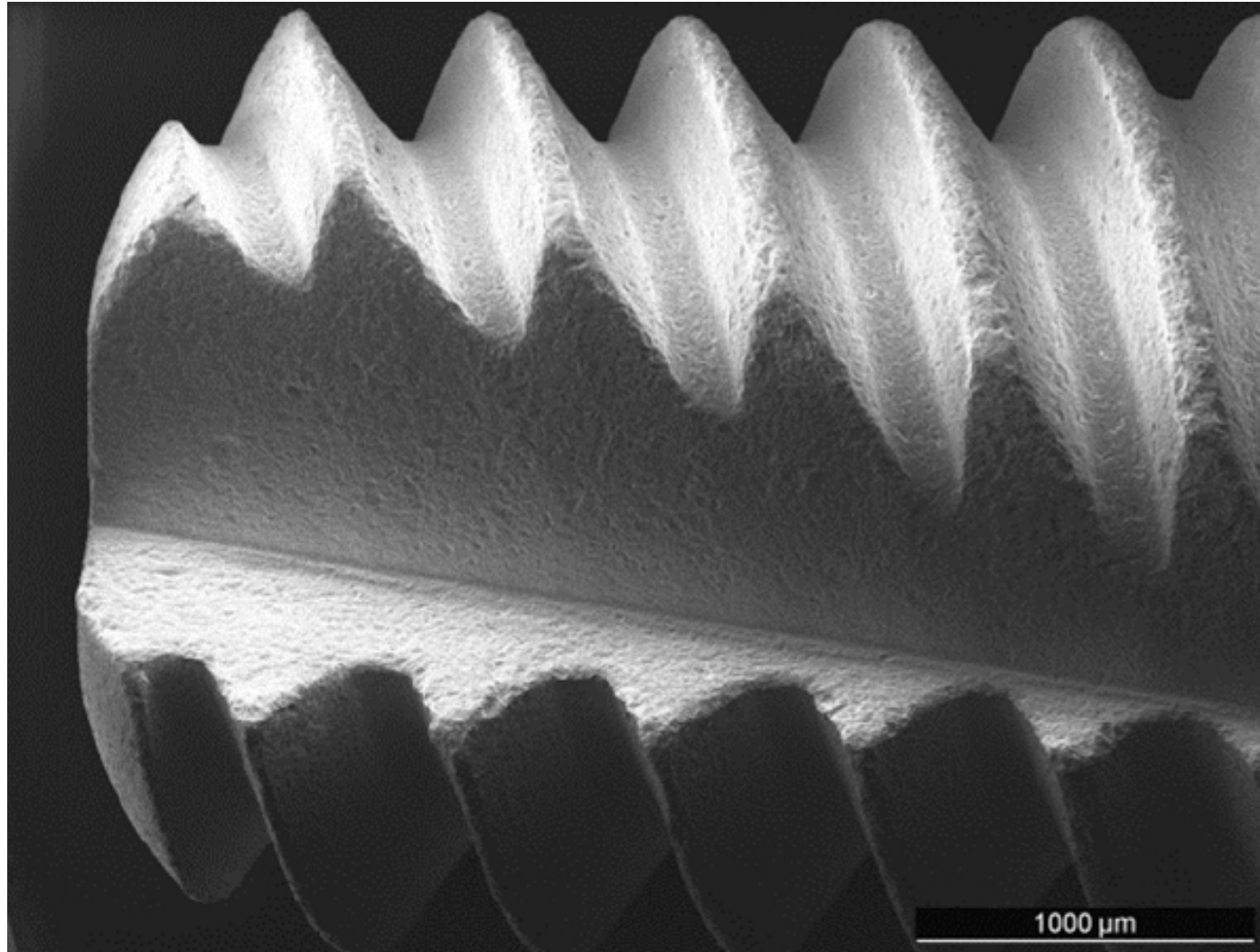
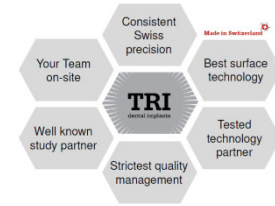


Surface Technology: TRI® SBA Gold Standard in the Industry

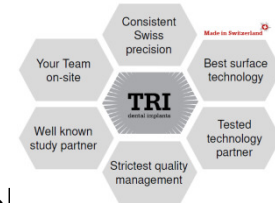


Precise Thread Structure

The TRI[®] SBA surface view of the implant thread



Audited Technology Partners



The TRI technology is continuously checked with the following development partners and further developed



✔ RMS: Research Institute of Surface Analysis (Switzerland)



✔ EMPA: Swiss Federal Institute of Materials Testing, Research partner for scanning electron microscopy (Switzerland)



✔ BioService: Laboratory partner for Zytotoxie tests (Germany)



✔ BBF: Laboratory partner for sterilisationvalidation (Germany)

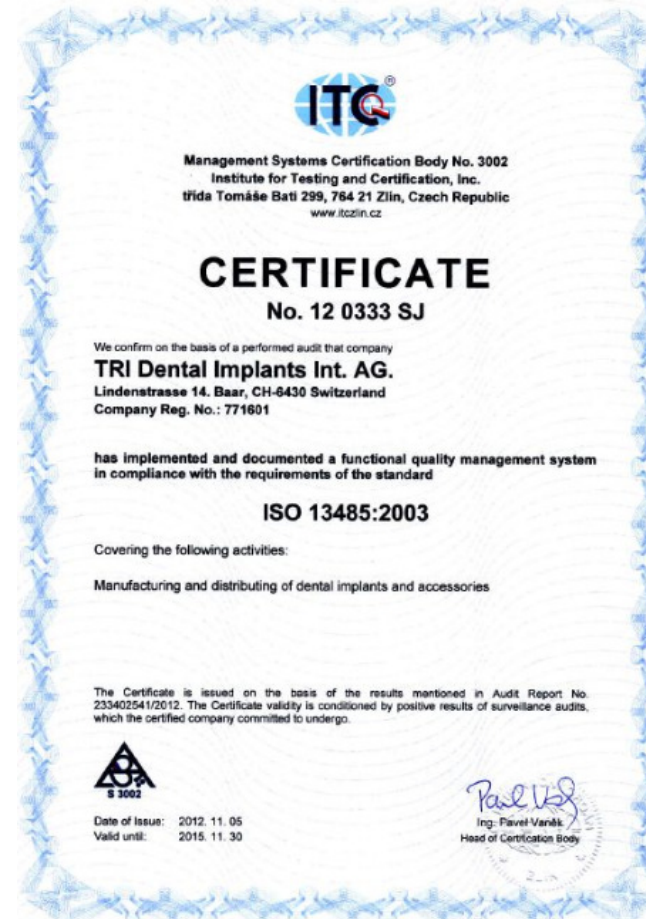
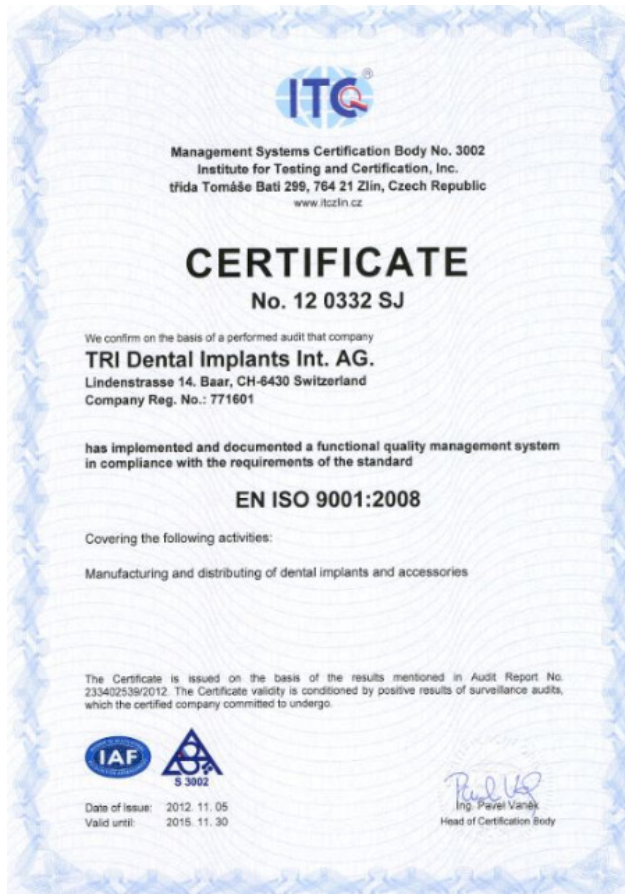
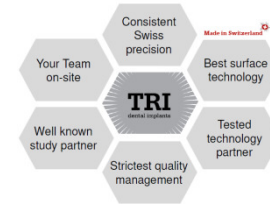


✔ SynergyHealth: Lab partner for bioburden testing (Switzerland)



Strict Quality Management

TRI lives an active quality management system according to ISO standards 13485 and 9001



TRI works with leading Clinicians worldwide - Selected Testimonials



"TRI Dental Implants combines science and clinical versatility with a very reasonable price. It has an excellent product line that not only makes it easy for hard tissue to integrate but also promotes soft tissue development with simple prosthetic solution. The company is aimed at providing quality products and excellent customer service which are important for practitioners as well as the patients that we care for."
Hom-Lay Wang, DDS, MSD, Ph D (Michigan, USA)



"An implant design concept that respects the highest hard and soft tissue parameters, as well as strict requirements for primary and secondary stability. All based on practical experience linked with the latest implant research."
Marius Steigmann, DDS (Neckarsgmünd, Germany)
Steigmann Institut



"The primary stability and self-adjustment of TRI Dental Implants is very reliable. The combination of an active 6 mm Implant with high primary stability performs very convincingly when used in the vertically atrophied bone."
Wolf-Ulrich Mehmke, DDS (Chemnitz, Germany)
www.zahnarzt-dr-mehmke.de

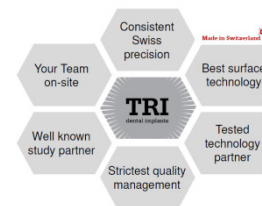


„The TRI drills are excellent.“
Dr. Torsten Kamm (Baden-Baden)



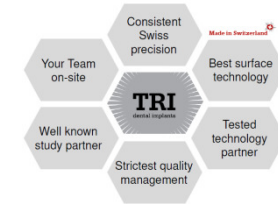
"The soft tissue concept of the TRI[®] Dental Implant System supports excellent soft tissue development without pushing the facial gingival mucosa apically!"
Sergio Spinato, DDS (Modena, Italy)

Reference studies: TRI Dental Implants



- Clin Oral Investig. 2010 Aug;14(4):411-6. Epub 2009 Jun 20.
The effect of thread design on stress distribution in a solid screw implant: a 3D finite element analysis. [Eraslan O](#),
- Int J Oral Maxillofac Implants. 2009 May-Jun;24(3):455-62.:
- Biomechanical effects of a maxillary implant in the augmented sinus: a three-dimensional finite element analysis. [Huang HL](#), [Fuh LJ](#), [Ko CC](#), [Hsu JT](#), [Chen CC](#) Clin Oral Implants Res. 2002 Dec;13(6):657-65.
- Three-dimensional finite element analysis of implant stability in the atrophic posterior maxilla: a mathematical study of the sinus floor augmentation. [Tepper G](#), [Haas R](#), [Zechner W](#), [Krach W](#), [Watzek G](#).
J Oral Implantol. 2009;35(3):130-5.
- Effect of implant design on initial stability of tapered implants. [Chong L](#), [Khocht A](#), [Suzuki JB](#), [Gaughan J](#).
J Am Dent Assoc. 2009 Nov;140(11):1366-72.
- Clinical methodologies for achieving primary dental implant stability: the effects of alveolar bone density. [Cavallaro J Jr](#), [Greenstein B](#), [Greenstein G](#).
Clin Oral Implants Res. 2006 Oct;17 Suppl 2:124-35.
- Bone density and primary stability in implant therapy. [Molly L](#).
Clin Oral Implants Res. 2010 Nov 19. doi: 10.1111/j.1600-0501.2010.02036.x. [Epub ahead of print]
- Primary stability, insertion torque and bone density of cylindrical implant ad modum Branemark: Is there a relationship? An in vitro study. [Trisi P](#), [De Benedittis S](#), [Perfetti G](#), [Berardi D](#).
Clin Oral Implants Res. 2009 May;20(5):467-71.
- Implant micromotion is related to peak insertion torque and bone density. [Trisi P](#), [Perfetti G](#), [Baldoni E](#), [Berardi D](#), [Colagiovanni M](#), [Scogna G](#)
- Comput Biol Med. 2010 Aug;40(8):681-6.
- Optimal design of thread height and width on an immediately loaded cylinder implant: a finite element analysis.
[Ao J](#), [Li T](#), [Liu Y](#), [Ding Y](#), [Wu G](#), [Hu K](#), [Kong L](#).
- Clin Oral Implants Res 1996;7(3):240-252.
Evaluation of an endosseous titanium implant with a sandblasted and acid-etched surface in the canine mandible: radiographic results. Cochran DL, Nummikoski PV, Higginbottom FL, Hermann JS, Makins SR, Buser D.
- J Biomed Mater Res 1998;40(1):1-11.
Bone response to unloaded and loaded titanium implants with a sandblasted and acid-etched surface: a histometric study in the canine mandible. Cochran DL, Schenk RK, Lussi A, Higginbottom FL, Buser D.
- J Biomed Mater Res 1999;45(2):75-83.
Interface shear strength of titanium implants with a sandblasted and acid-etched surface: a biomechanical study in the maxilla of miniature pigs. Buser D, Nydegger T, Hirt HP, Cochran DL, Nolte NP.

Your Team at Your Door-Step



TRI is represented in more than 20 countries worldwide

Direct Markets:

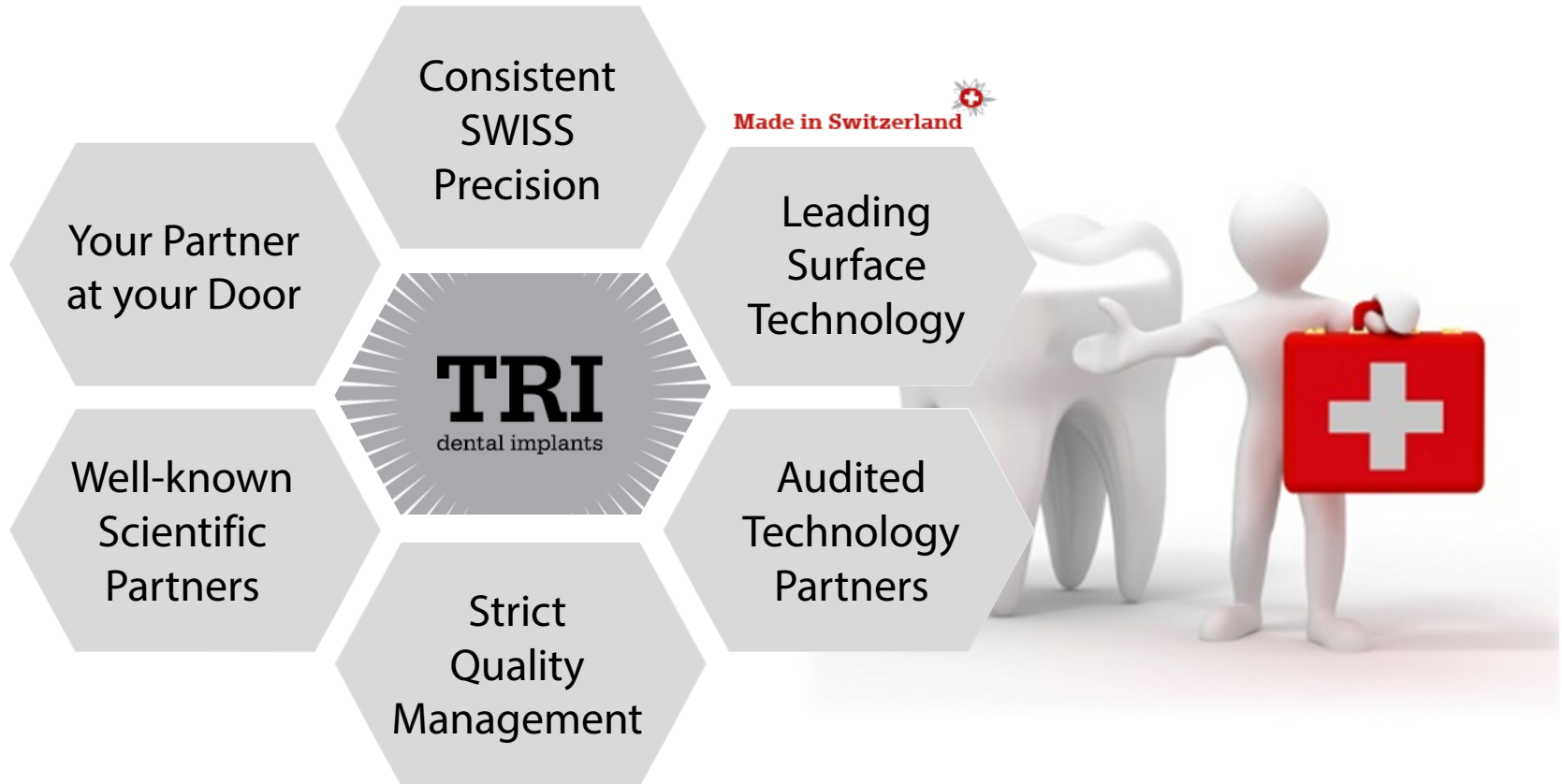
- Germany
- Italy
- France
- Hungary
- United Kingdom

Distributor Markets:

- Australia
- China
- Columbia
- Egypt
- Greece
- Hong Kong
- Iraq
- Iran
- Lebanon
- Morocco
- Netherlands
- Portugal
- Romania
- Russia
- Saudi Arabia
- Serbia
- Taiwan
- Turkey
- UAE (Emirates)



Our Quality Promise from Switzerland!



Commitment to excellence - at an unbeatable price!

Premium Swiss Quality means experience, innovation and commitment to precision



- **Soft Tissue Concept:** For the highest standards and results in **AESTHETICS**
- **TRI Friction:** For maximum **SECURITY** connection between the implant and crown
- **TRI Bone-Adapt:** For optimal **STABILITY** of the implant in the bone
- **TRI SBA Surface:** For **RELIABILITY** in the healing of the implant
- **Fair Value:** 50% cheaper than a comparable premium implant - with the same range of services!